

Massage

Aromatherapy Full Body Massage -60 mins	£48
Aromatherapy Back, Neck and Shoulder- 30 mins	£30
Hot Stone Full Body- 60 mins	£60
Hot Stone Back, Neck & Shoulder- 30 mins	£42
Pregnancy Full Body - 60 mins	£50
Pregnancy Back, Neck & Shoulder - 30 mins	£35

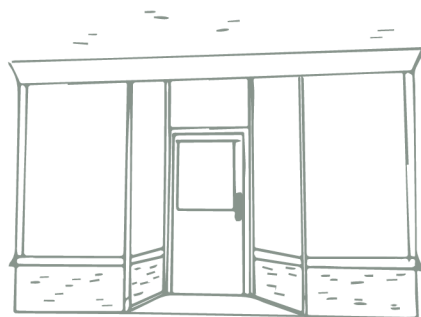
Back Exfoliation Treatment £40

Unwind and give your back the treat it needs. Enjoy a cleanse, exfoliation and extraction. Accompanied with a relaxing mini back massage and mask. All removed with hot steam towels to aid in a deeper clean.

Eye Treatments

Eyebrow Wax	£15
Eyebrow Wax & Tint	£20
Eyebrow Tint	£10
Eyelash Tint	£18
Eyebrow & Eyelash Tint	£22
Lash Lift & Tint	£50
Cashmere lash extensions	POC

Patch test required 48 hrs prior to treatment.



Opening Times

Monday - Closed
Tuesday 9 - 5 30
Wednesday 9 - 5 30
Thursday 9 - 7
Friday 9 - 5 30
Saturday 9 - 4 30
Sunday- Closed

Cancellations must be made at least 24 hours prior to treatment time, or a charge will be incurred.

 23 High Street, Downton, Salisbury SP5 3PG

 01725 728015

 Ellure Hair and Beauty

 ellure_beauty



ellurebeauty.co.uk



Treatment Menu

Waxing

Half Leg & Standard Bikini	£35
Full Leg & Standard Bikini	£40
Full Leg	£28
3/4 Leg	£24
1/2 Leg	£20
Standard Bikini	£18
High Bikini	£22
Underarm	£12
Lip	£10
Chin	£10
Lip & Chin	£16
Full Arm	£18
Chest	£25
Back	£25
Chest & Back	£45
Brazilian	£30
Hollywood	£34

Spray Tans

St Tropez is the UK's number one tanning brand, which provides a natural looking streak free tan. St Tropez contains 100% natural tanning agent.

St Tropez Spray Tan	£30
---------------------	-----



GEleration



GEleration is a soak off gel polish. The natural nail is cared for and protected throughout the life cycle of a GEleration manicure and pedicure. The gels act as a shield for the nails, protecting them and helping them to grow. Nails will stay shiny and fresh for up to 3 weeks.

Luxury GEleration Manicure £36
Includes hand exfoliation, massage, cuticle care, nail shape and gel polish. (75 Mins)

GEleration Shape & Polish £28
Nails are shaped and finished off with GEleration Polish (45 Mins)

Pedicure with GEleration £40
Hard skin removed, feet and legs exfoliated and massaged. Cuticles are groomed and nails are filed and finished with GEleration polish. (105 Mins)

GEleration Removal £10
(30 Mins)

Nail Art POC

Luxury Facial

£50

Enjoy a personally customised facial with a cleanse, tone, exfoliate, face massage, mask, scalp massage and a choice of hand or foot massage topped off with nutritious serums, eye cream and moisturiser. A complete and luxurious treatment.

Natural Jessica Manicures / Pedicures



Jessica Manicure £30
Includes hand and arm massage, cuticle care, nails are shaped and polished. (60 Mins)

Jessica File & Polish £18
Nails are shaped and Jessica polish applied. (30 Mins)

Jessica Pedicure £30
A luxury pedicure with hard skin removed, legs and feet are exfoliated and massaged. Cuticles are groomed and nails are shaped followed by Jessica nail polish applied. (60 Mins)

Children's File & Polish (up to age 13) £15

Mini Treatments

Mini Jessica Manicure £25
Fabulous fingers in a flash! Nails filed, cuticles groomed, and Jessica polish applied. (30 Mins)

Mini Jessica Pedicure £25
An express pedicure includes foot scrub, legs and feet exfoliated, cuticles groomed and Jessica polish applied. (45 Mins)

Elim Pedicure £45

Elim is a medical grade pedicure treatment which uses state-of-the-art ingredients to remove hard skin and calluses from the feet.

Elim with polish	£50
Elim with gel	£56