

Massage

Aromatherapy Full Body Massage -60 mins	£58
Aromatherapy Back, Neck and Shoulder- 30 mins	£38
Hot Stone Full Body- 60 mins	£64
Hot Stone Back, Neck & Shoulder- 30 mins	£48
Pregnancy Full Body - 60 mins	£54
Pregnancy Back, Neck & Shoulder - 30 mins	£38

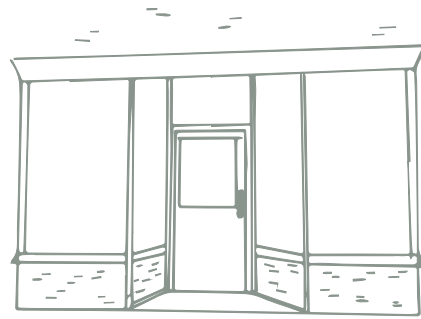
Back Exfoliation Treatment

Unwind and give your back the treat it needs. Enjoy a cleanse, exfoliation and extraction. Accompanied with a relaxing mini back massage and mask. All removed with hot steam towels to aid in a deeper clean.

Eye Treatments

EyebrowWax	£16
Eyebrow Wax & Tint	£22
Eyebrow Tint	£12
Eyelash Tint	£20
Eyebrow & Eyelash Tint	£24
Lash Lift & Tint	£60
Cashmere lash extensions	POC

Patch test required 48 hrs prior to treatment.



Opening Times

Monday - Closed
Tuesday 9 - 5 30
Wednesday 9 - 5 30
Thursday 9 - 7
Friday 9 - 5 30
Saturday 9 - 4 30
Sunday- Closed

Cancellations must be made at least 24 hours prior to treatment time, or a charge will be incurred.

 23 High Street, Downton, Salisbury SP5 3PG

 01725 728015

 Ellure Hair and Beauty

 ellure_beauty



ellurebeauty.co.uk

Prices 2026-2027



Treatment Menu

Waxing

Half Leg & Standard Bikini	£38
Full Leg & Standard Bikini	£45
Full Leg	£32
3/4 Leg	£28
1/2 Leg	£24
Standard Bikini	£20
High Bikini	£24
Underarm	£15
Lip	£12
Chin	£12
Lip & Chin	£18
Full Arm	£20
Chest	£25
Back	£25
Chest & Back	£45
Brazilian	£34
Hollywood	£36



GELeration



GELeration is a soak off gel polish. The natural nail is cared for and protected throughout the life cycle of a GELeration manicure and pedicure. The gels act as a shield for the nails, protecting them and helping them to grow. Nails will stay shiny and fresh for up to 3 weeks.

Luxury GELeration Manicure £38
Includes hand exfoliation, massage, cuticle care, nail shape and gel polish. (75 Mins)

GELeration Shape & Polish £30
Nails are shaped and finished off with GELeration Polish (45 Mins)

Pedicure with GELeration £42
Hard skin removed, feet and legs exfoliated and massaged. Cuticles are groomed and nails are filed and finished with GELeration polish. (105 Mins)

GELeration Removal £12
(30 Mins)

Nail Art POC

Natural Jessica Manicures / Pedicures



Jessica Manicure £34
Includes hand and arm massage, cuticle care, nails are shaped and polished. (60 Mins)

Jessica File & Polish £20
Nails are shaped and Jessica polish applied. (30 Mins)

Jessica Pedicure £34
A luxury pedicure with hard skin removed, legs and feet are exfoliated and massaged. Cuticles are groomed and nails are shaped followed by Jessica nail polish applied. (60 Mins)

Children's File & Polish (up to age 13) £18

Mini Treatments

Mini Jessica Manicure £26
Fabulous fingers in a flash! Nails filed, cuticles groomed, and Jessica polish applied. (30 Mins)

Mini Jessica Pedicure £26
An express pedicure includes foot scrub, legs and feet exfoliated, cuticles groomed and Jessica polish applied. (45 Mins)

Spray Tans

St Tropez is the UK's number one tanning brand, which provides a natural looking streak free tan. St Tropez contains 100% natural tanning agent.

St Tropez Spray Tan £34

Luxury Facial

£55

Enjoy a personally customised facial with a cleanse, tone, exfoliate, face massage, mask, scalp massage and a choice of hand or foot massage topped off with nutritious serums, eye cream and moisturiser. A complete and luxurious treatment.

Elim Pedicure £45

Elim is a medical grade pedicure treatment which uses state-of-the-art ingredients to remove hard skin and calluses from the feet.

Elim with polish £50

Elim with gel £56